

MONTHLY MEMBERSHIP PROGRESS REPORT

LOCATION INDIA

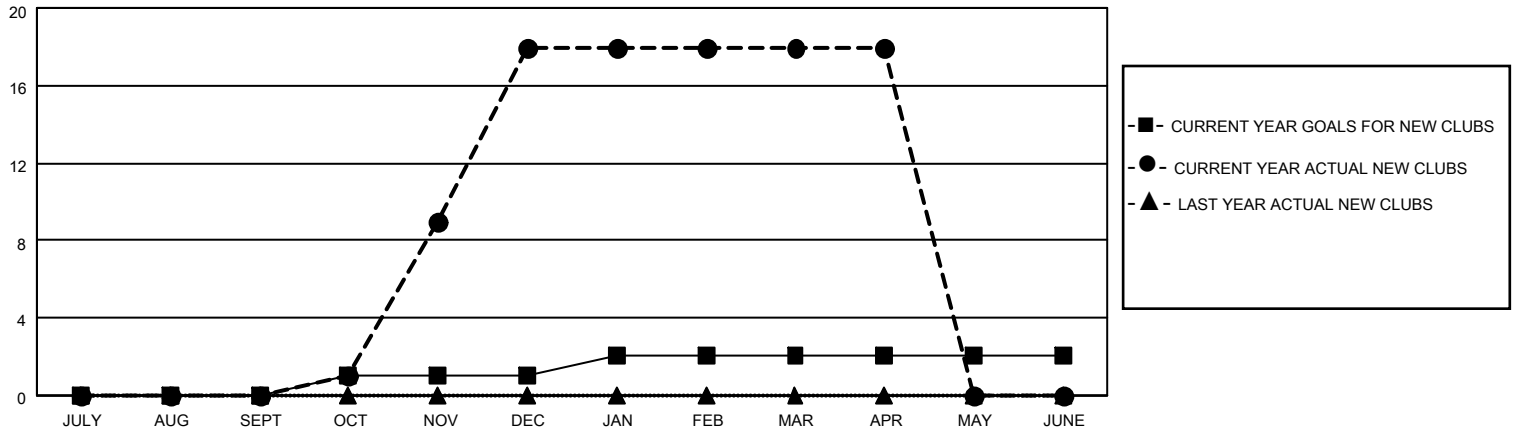
District 3231A1

Results as of: 4/30/2021

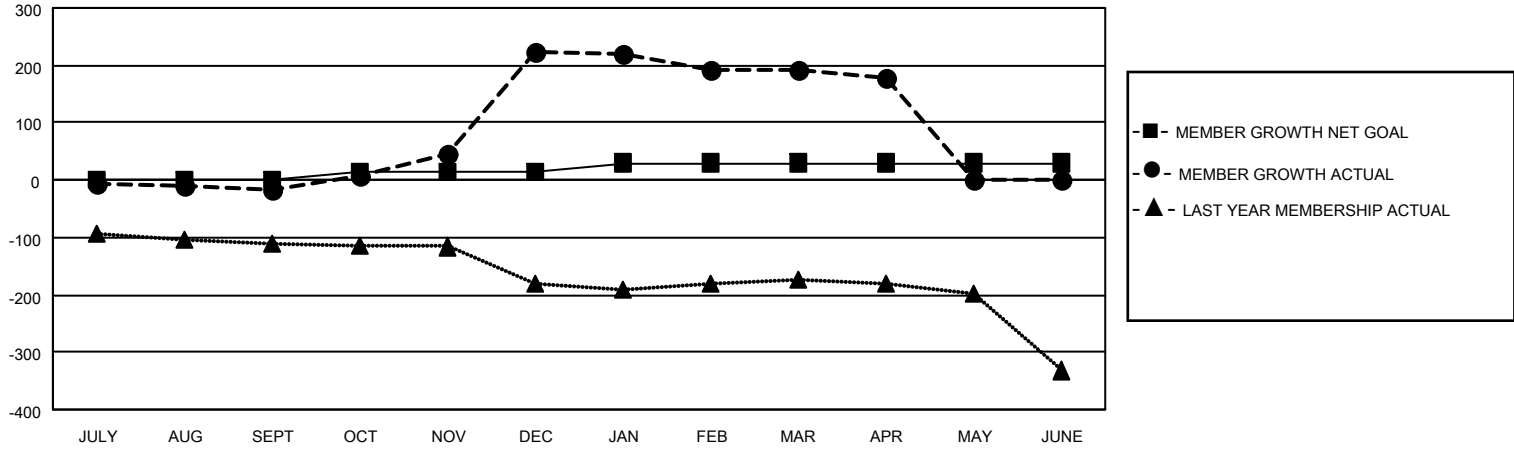
Clubs			
RESULTS FOR 2020-2021			
QUARTER	NEW CLUB GOAL	NEW CLUBS	DROPPED CLUBS
JULY/AUG/SEPT	0	0	1
OCT/NOV/DEC	1	18	0
JAN/FEB/MAR	1	0	2
APR/MAY/JUNE	0	0	1

Members			
RESULTS FOR 2020-2021			
QUARTER	MEMBER GROWTH NET GOAL	MEMBER GROWTH ACTUAL	DROPPED MEMBERS ACTUAL (including transfers)
JULY/AUG/SEPT	0	21	30
OCT/NOV/DEC	15	303	51
JAN/FEB/MAR	15	15	41
APR/MAY/JUNE	0	2	17

GOALS AND ACTUAL NEW CLUBS CUMULATIVE



GOALS AND ACTUAL MEMBERS CUMULATIVE



DROPPED CLUBS: 4	41 CLUBS OF 75 ADDED 1 OR MORE NEW MEMBERS	<u>GENDER DISTRIBUTION</u>
<u>DROPPED MEMBERS</u>		MALE 1,048 (59.18%)
DECEASED 31		FEMALE 723 (40.82%)
CLUB CANCELLED 23		TOTAL FAMILY UNIT MEMBERS 829
OTHER 85		FAMILY MEMBERS PAYING HALF DUES 458
TOTAL 139	CLICK HERE FOR CUMULATIVE MEMBERSHIP DATA	